

Piano

TEMPO Music

1

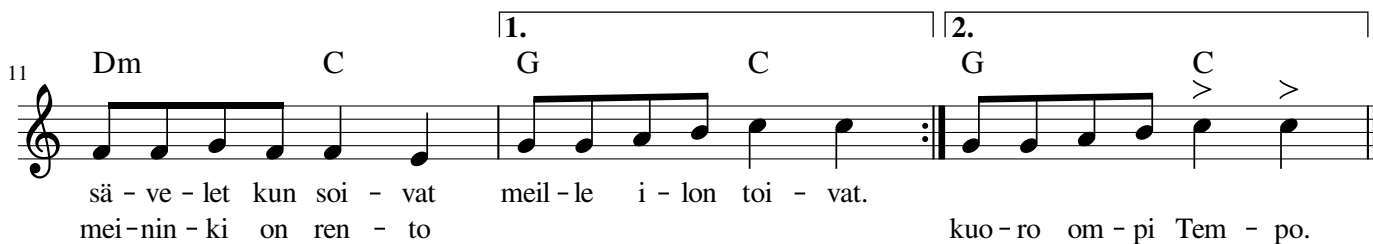
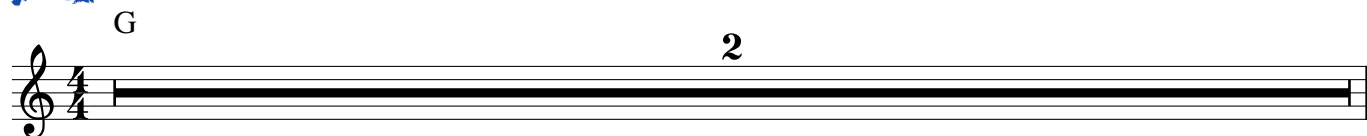


EL SISTEMA

Finlan



RY



Temporalli
tuo esitykseen
vauhtia!



Piano



Tempo-ralli

Jarmo Ahvenainen

2. kerralla

Opettajat 2 Jousisoittajat

5 viulu soolo

8

11

14 1.

17 2.

Piano

El grillito



Alkusoitto

El grillito toca su violín,
:cri-cri cri-cri cri:
Linda serenata!
:déjame dormir!:



Heinäsiirikka soittaa viulua,
:kri-kri kri-kri kri:
Kaunis melodia
:anna nukkuu!:

Alkusoitto Välisoitto
Orkesteri soittaa Laulu suomeksi
Välisoitto Välisoitto
Laulu espanjaksi Orkesteri soittaa



Piano

A mi mono



Alkusoitto

A mi mono le gusta la lechuga.
A pinani se tykkää salaata.
tis - ta.

plan - cha di - ta, sin u - na so - la rru - ga.
Sa - laat - ti se on to - si ter - veel - lis - tä!

:A mi mono le gusta la lechuga:
Plancha dita, sin una sola arruga!

:Apinani se tykkää salaata:
Salaatti se on tosi terveellistä!



Alkusoitto Lauku espanjaksi
Orkesteri soittaa Välisoitto
Välisoitto Lauku suomeksi
Loppusoitto



Piano

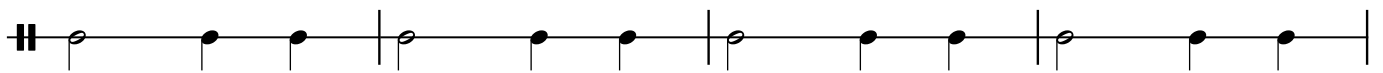
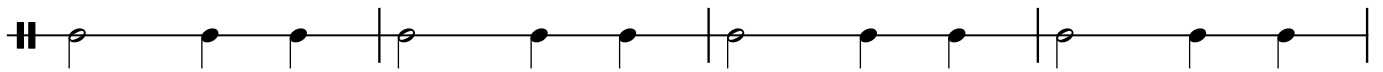
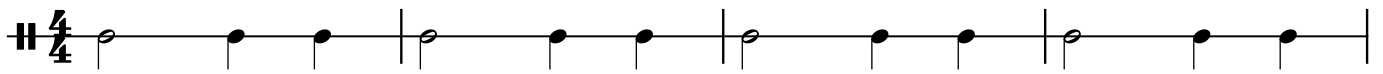
Sointupyramidi



Voi soittaa myös rummulla

Rumpu

Sointupyramidi





Satu



Bassojen ja sellojen kanssa

rit. _ _ _ _ _

Satu meni saunaan,
laittoi laukun naulaan.
Satu tuli saunasta,
otti laukun naulasta.

Piano

Hyttynen

Trad

4 4

4 4

A piano introduction consisting of two staves. The top staff has a treble clef and a 2/4 time signature. The bottom staff has a bass clef and a 2/4 time signature. Both staves contain a single horizontal line representing a 4-measure rest. Above the top staff and below the bottom staff, the number '4' is written to indicate the duration of the rest. The piece begins with a repeat sign.

Dm

A musical system with two staves. The top staff has a treble clef and a 2/4 time signature. The bottom staff has a bass clef and a 2/4 time signature. The top staff begins with a Dm chord and contains a melody of eighth notes. The bottom staff contains a rhythmic accompaniment of eighth notes. The system ends with a repeat sign.

Dm

1. A 2. Dm A

A musical system with two staves. The top staff has a treble clef and a 2/4 time signature. The bottom staff has a bass clef and a 2/4 time signature. The top staff begins with a Dm chord and contains a melody. The system is divided into two endings. The first ending is marked '1.' and leads to a chord change to A. The second ending is marked '2.' and leads to a chord change to Dm and then A. The system ends with a repeat sign.

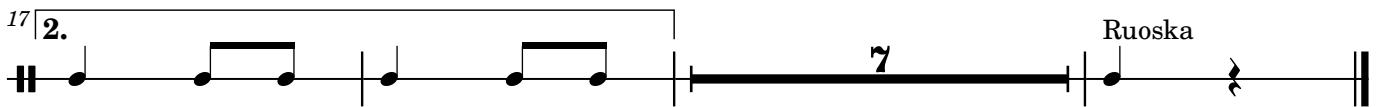
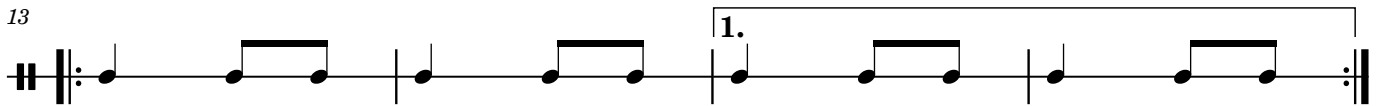
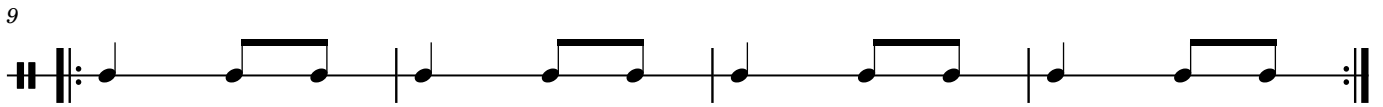
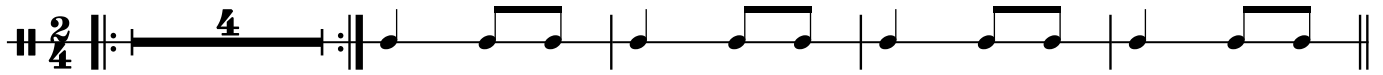
3 1. 2. 2 Ruoska

A musical system with two staves. The top staff has a treble clef and a 2/4 time signature. The bottom staff has a bass clef and a 2/4 time signature. The top staff begins with a triplet of eighth notes, followed by two first endings (marked '1.' and '2.') and a second ending (marked '2.') leading to a final chord. The bottom staff contains a rhythmic accompaniment. The system ends with a repeat sign.

Guiro

Hyttynen

Trad



Jänis istui maassa

Trad

1. säkeistö

D G D G D A7 D

Musical notation for the first system of the first section, measures 1-5. The music is in 4/4 time. The right hand plays a melody with eighth notes and quarter notes, while the left hand provides a bass line with quarter notes. The key signature has one sharp (F#).

6 A7 D

A D

Musical notation for the second system of the first section, measures 6-10. Measures 6-7 are in 4/4 time, while measures 8-10 are in 2/4 time. The right hand continues the melody, and the left hand plays a steady bass line.

11

Musical notation for the third system of the first section, measures 11-15. This system consists of a continuous tremolo accompaniment in both the right and left hands, with the right hand playing eighth notes and the left hand playing quarter notes.

Välisoitto

arco

tremolo

16

Musical notation for the fourth system of the first section, measures 16-20. Measures 16-19 are a tremolo accompaniment. Measure 20 is a single melodic phrase in the right hand, marked 'arco', with a 'tremolo' marking above it. The left hand continues with a simple bass line.

3. säkeistö

D G D G D A7 D

20

Musical notation for the first system of the third section, measures 20-24. Measures 20-21 are a tremolo accompaniment. Measures 22-24 are a melody in the right hand with a bass line in the left hand, similar to the first section.

25 A7 D

A D

Musical notation for the second system of the third section, measures 25-29. Measures 25-26 are a tremolo accompaniment. Measures 27-29 are a melody in the right hand with a bass line in the left hand.

Piano

Jaakko-kulta



Trad.



Jaakko kulta, Jaakko kulta!

Herää jo! Herää jo!

Kellojasi soita! Kellojasi soita!

Pium paum poum, pium paum poum!

Piano



Buffonen Tanz



D G D A

D G D A7 D

A Em Bm D

A Em D A7 D